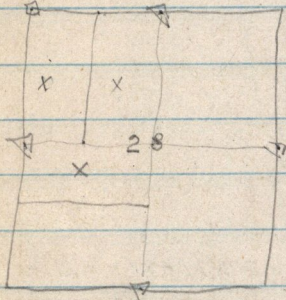


E. 1/2 N. W 1/4 Sec 28 T 7 N R 1 E, S L. M

Patd by Jas. M. Lerrin -

N. 1/2 S. W 1/4 and W 1/2 NW 1/4 Sec. 28 T 7 N R 1 E

Patd by Jas. M. Lerrin - See page 182 -



See Field Book P₁ page 70 For additional notes

N. 66° 19' W
A. Clark

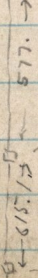
N 33° 31' E
W 104° 32' E
L. 200 FT. 300 FT.
N 41° 32' E
W 104° 41' E

S 49° 57' W
E. Gable
Gibson

E. SW. cor. Sec 20 T 7 N R 1 E

S 68° 25' W to E, Gable John Gibson
N 40° 56' W to S.W. cor. A. Clark brick Ho.

36



S 83° 24' E. Co. Road